

# OCEAN Air Pull-Setters



**LG-801**  
Free speed: 3000rpm  
Thread size: M3 - M4



**LG-802**  
Free speed: 1500rpm  
Thread size: M5 - M6

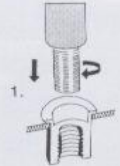


**LG-804**  
Free speed: 600rpm  
Thread size: M8 - M10



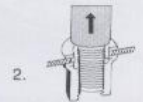
**LG-805**  
Free speed: 1500rpm  
Thread size: M3 - M6

## RIVET-NUTS

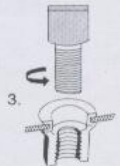


### HOW IT WORKS:

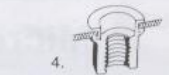
1. Puts the Rivet-Nut into the hole made on the part. Screws the tool mandrel itself into the Rivet-Nut.



2. Pulls the threaded portion of the Rivet Nut fastener shank toward the blind side of the work.



3. Unscrews the tool mandrel.



4. It's ready for screw or bolt.

A RIVET-NUT is a fastener that allows to set a thread on details with reduced thickness or wouldn't be economical or possible to make a thread by tool. It can be installed from one side in seconds.

Once a RIVET-NUT is installed, It is ready to use, with clean threads available for machine screw attachments.

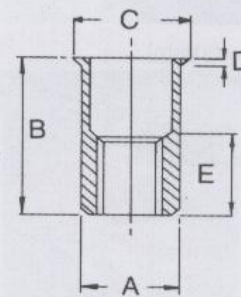
## SPECIFICATIONS

Size	European System			Countersunk			Hole $\begin{matrix} +0.1 \\ -0 \end{matrix}$
	A $\begin{matrix} +0 \\ -0.1 \end{matrix}$	B $\pm 0.2$	C $\pm 0.2$	D $\pm 0.2$	E $\pm 0.2$	Grip Range	
M3	5	9	6.0	0.3	5.0	0.5/1.5	5
M4	6	10	7.0	0.4	6.0	0.5/2.0	6
M5	7	12	8.0	0.5	6.0	0.5/3.2	7
M6	9	15	10.0	0.5	8.0	0.8/4.0	9
M8	11	16	12.0	0.6	9.0	1.0/4.0	11
M10	13	18	14.0	0.6	9.5	1.0/5.0	13

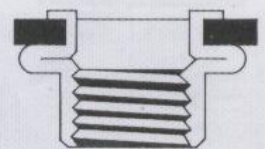
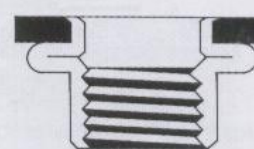
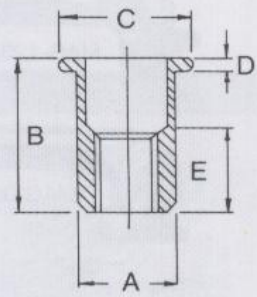
  

Size	European System			Large Flange			Hole $\begin{matrix} +0.1 \\ -0 \end{matrix}$
	A $\begin{matrix} +0 \\ -0.1 \end{matrix}$	B $\pm 0.2$	C $\pm 0.2$	D $\pm 0.2$	E $\pm 0.2$	Grip Range	
M3	5	9.5	8.0	0.6	5	0.5/1.5	5
M4	6	11.2	9.0	0.8	6	0.5/2.0	6
M5	7	12.5	10.0	1.0	6	0.5/3.0	7
M6	9	16.0	13.0	1.5	8	0.8/4.0	9
M8	11	18.0	14.5	1.5	9	1.0/4.0	11
M10	13	20.5	16.0	1.5	10	1.0/5.0	13

Countersunk



Large Flange



Material: Low Carbon Steel, Zinc Plated, Aluminum Alloy and plain finish.