

MagicPin

Overview

Our MagicPin 100T with the UMC Box controller is a powerful, flexible dot peen marking system with the most affordable price point in the industry. This compact, low cost system combines with your windows XP/2000 laptop or PC to run our feature packed easy to use software. Text, serial numbers, graphics and 2D barcodes can all be marked with the MagicPin 100T dot peen system. A T-Slot bed plate and manual height adjustment allows for easy setup and operation.



Features

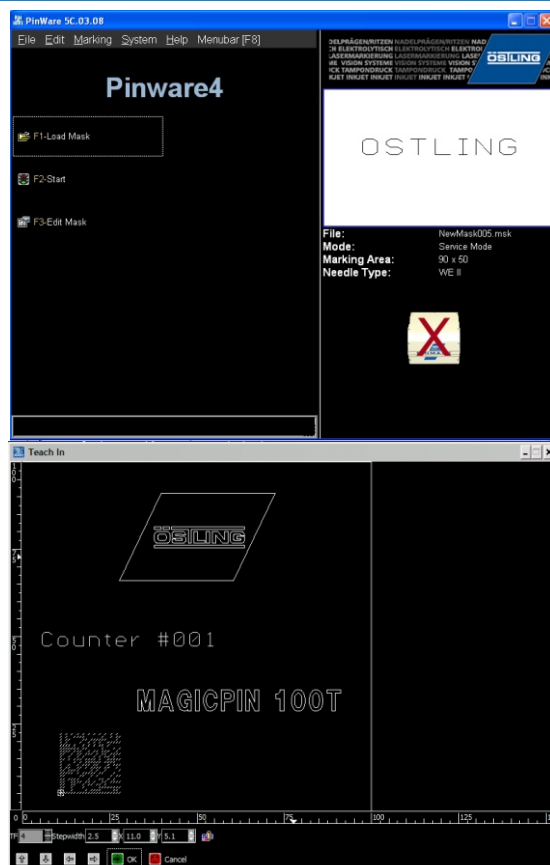
- Programmable needle speed control
- 4" X 4" marking window
- Marks text, serial/date codes, graphics, and 2D codes
- Manual height adjustment/T-slot work surface
- Foot switch start included
- Powerful software control

Software

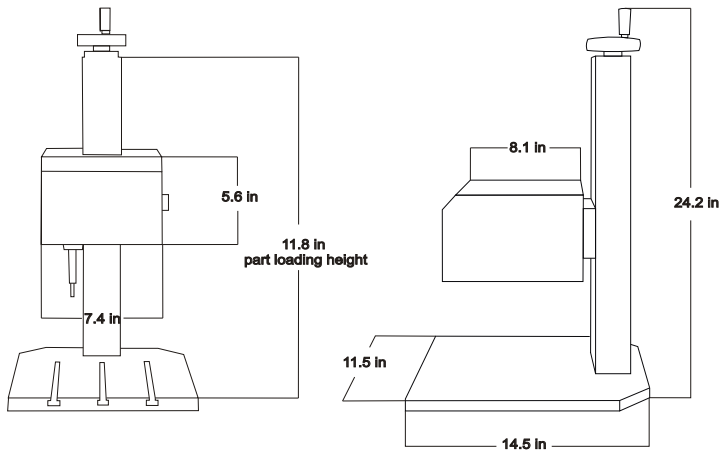
With our Pinware software, you can easily create and mark text, serial/date codes, graphics and 2D barcodes. This feature packed Windows XP/2000 software controls the MagicPin dot peen marking system using your laptop or desktop PC. With an intuitive menu-driven interface, a "what you see is what you get" display, and "teach-in" alignment feature you can create new part marking programs in seconds. Take our software for a test drive; visit the downloads section at our website www.permanentmarking.com today to see how easy it is!

With the Pinware software creating a new marking file is simple. Just type in the text, define placement and orientation, press the preview button to confirm the mark, and press start!

UMC Box



MagicPin Specifications



TECHNICAL DATA

| | |
|-------------------------|--|
| Head Dimensions | 7.4" x 8.1" x 5.6" |
| Marking Area | 4.0" x 4.0" |
| Weight | 9.9 lbs |
| Control Unit | UMCbox |
| Max. Marked Part Height | 11.8 in. (with WE2 needle) |
| Resolution | 0.0025 in. per motor step |
| Available Needles | WE2 and WP2 |
| Marking Speed | 5 characters per second |
| Compressed Air | 6 bar (6 mm connector) |
| Power Supply | via control unit (110 - 230 V AC, 50/60 Hz) |

UMC Box Specifications



TECHNICAL DATA

| | |
|----------------|--|
| Components | Integrated MC stepper motor control |
| User Interface | Windows/Linux software or serial commands |
| Display | 4 Status LEDs |
| Memory | Integrated memory for marking programs |
| Motor Drive | High-efficiency 2-axis motor control |
| Dimensions | 12.2" X 2.9" X 6.9" |
| Weight | 5.5 lbs |
| Output | 8 digital, 24V = |
| Input | 8 digital, 24V = |
| Interfaces | RS232/RS485: Communication protocol, 24V I/O: Start, e-stop |

SOFTWARE - PINWARE 4

| | |
|----------------------|---|
| Program Function | Intuitive, Menu Driven |
| Character Height | Programmable from 0.1 to 99 mm |
| Character Width | Programmable in % |
| Positioning | X Y Coordinates or Teach In |
| Additional Functions | 2D code, date,time, shift, user-defined, circular |

Needles

WEII



Standard Needle

| | |
|-----------------|---------|
| Frequency | 200 Hz |
| Air Pressure | 4-6 bar |
| Piston Diameter | 14 mm |
| Maximum Stroke | 4 mm |
| Needle Diameter | 3 mm |

WP2



Standard Needle

| | |
|-----------------|-----------|
| Frequency | 50-200 Hz |
| Air Pressure | 3-6 bar |
| Piston Diameter | 10 mm |
| Maximum Stroke | 10 mm |
| Needle Diameter | 3 mm |

ÖSLING
TECHNOLOGIES